



GAT MONTHLY MEMBERSHIP PROGRESS REPORT

Results as of: 6/30/2023

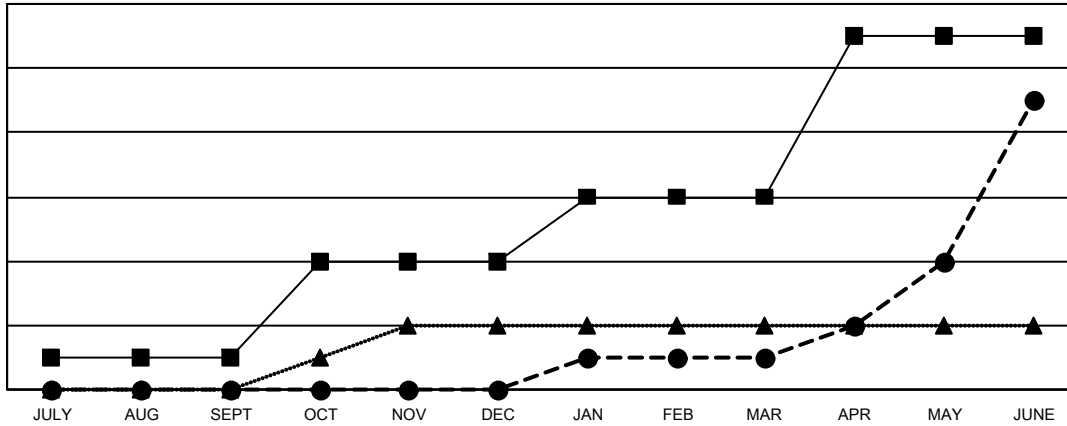
Multiple District 105

LOCATION: ENGLAND

Clubs			
RESULTS FOR 2022-2023			
QUARTER	NEW CLUB GOAL	NEW CLUBS	DROPPED CLUBS
JULY/AUG/SEPT	1	0	6
OCT/NOV/DEC	3	0	3
JAN/FEB/MAR	2	1	7
APR/MAY/JUNE	5	8	3

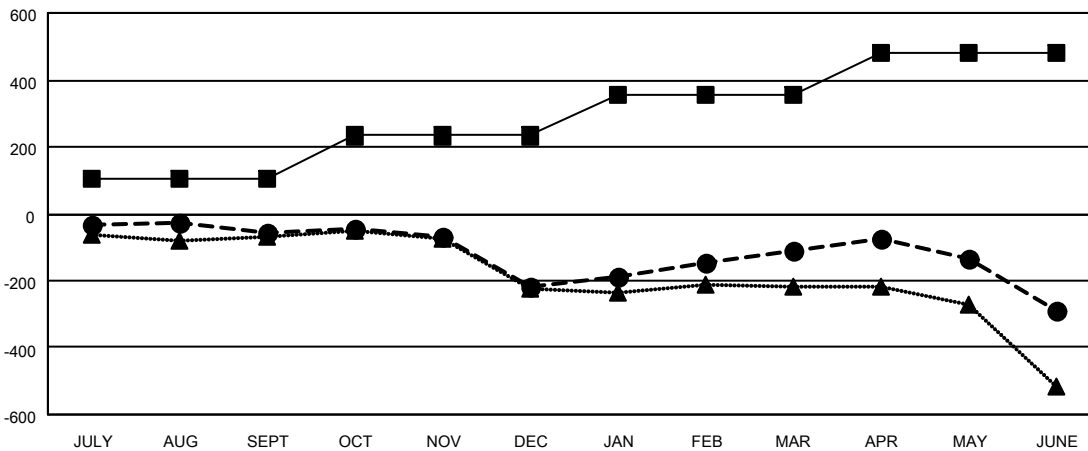
Members			
RESULTS FOR 2022-2023			
QUARTER	MEMBER GROWTH NET GOAL	MEMBER GROWTH ACTUAL	DROPPED MEMBERS ACTUAL (including transfers)
JULY/AUG/SEPT	104	244	269
OCT/NOV/DEC	129	256	381
JAN/FEB/MAR	122	376	236
APR/MAY/JUNE	127	438	562

GOALS AND ACTUAL NEW CLUBS CUMULATIVE



- CURRENT YEAR GOALS FOR NEW CLUBS
- CURRENT YEAR ACTUAL NEW CLUBS
- ▲- LAST YEAR ACTUAL NEW CLUBS

GOALS AND ACTUAL MEMBERS CUMULATIVE



- MEMBER GROWTH NET GOAL
- MEMBER GROWTH ACTUAL
- ▲- LAST YEAR MEMBERSHIP ACTUAL

DROPPED CLUBS: 19	
DROPPED MEMBERS	
DECEASED	200
CLUB CANCELLED	20
OTHER	1,229
TOTAL	1,449

341 CLUBS OF 583 ADDED 1 OR MORE NEW MEMBERS

[CLICK HERE FOR CUMULATIVE MEMBERSHIP DATA](#)

GENDER DISTRIBUTION	
MALE	6,788 (69.41%)
FEMALE	2,990 (30.58%)
NON BINARY	1 (0.01%)
PREFER NOT TO ANSWER	0 (0.00%)
TOTAL FAMILY UNIT MEMBERS	1,301
FAMILY MEMBERS PAYING HALF DUES	661